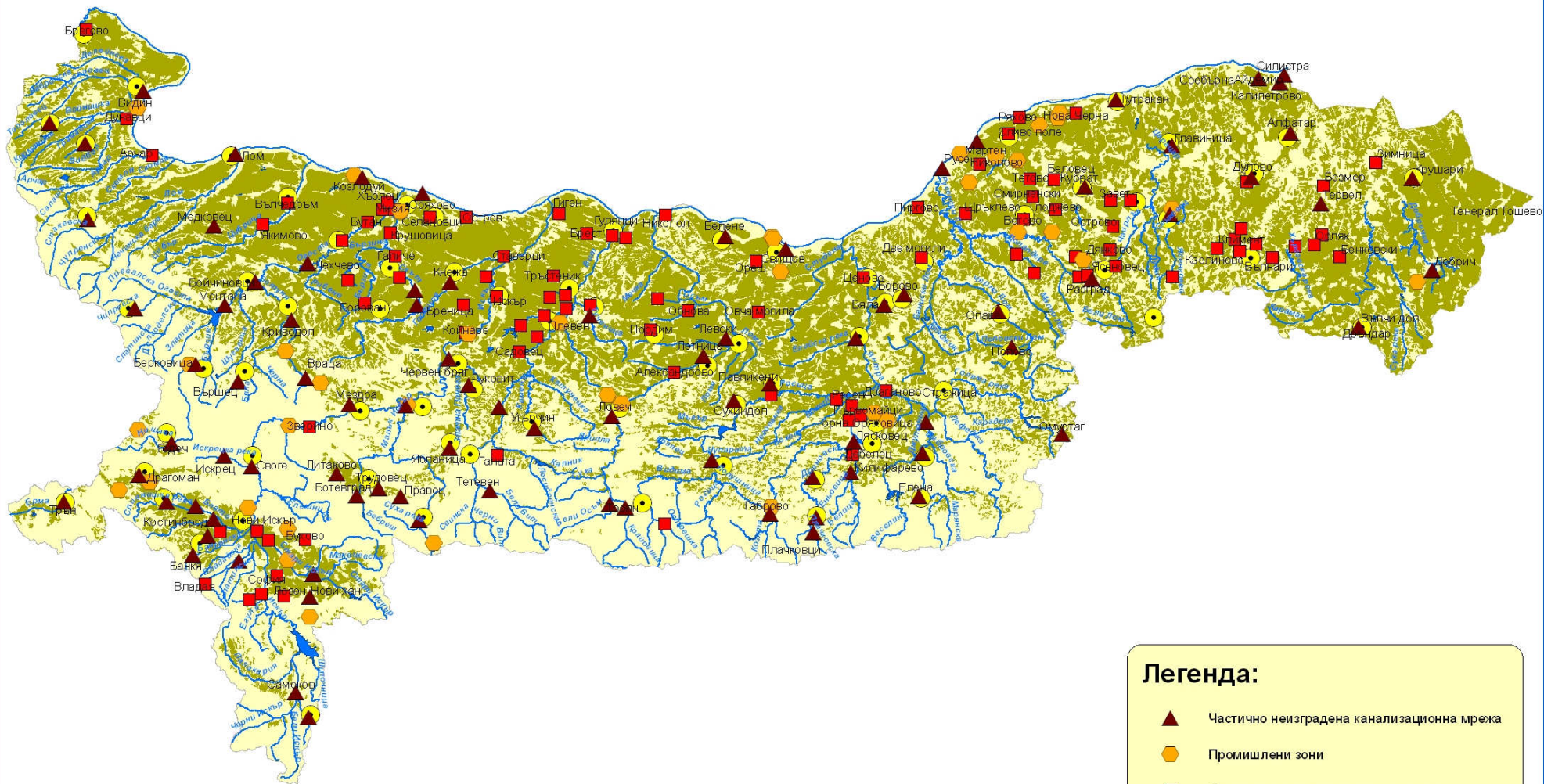




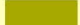





ЗАМЪРСЯВАНЕ ОТ ДИФУЗНИ ИЗТОЧНИЦИ НА ПОВЪРХНОСТНИ ВОДИ



Легенда:

-  Частично неизградена канализационна мрежа
-  Промислени зони
-  Неизградена канализационна мрежа
-  Съществуващи общински депа
-  Обработваема земя
-  Езера

